



THE ECHIDNA

Afterlee Public School

Ph 66333163

Email afterlee-p.school@det.nsw.edu.au

Term 2 Week 6 Thursday 4th June 2020



Dates to Remember

- **Term 2 social distancing rules for adults remains unchanged** (in summary: parents should be dropping off and picking up students from the car park and implementing 1.5m distancing and phone contact for appointments whenever possible).
- **Scholastic Book Club issue 4 orders due 05/06/20**

From the Principal's desk-

Thank you to all families for returning your borrowed Laptops. We have 100% returned and all in great condition, so well done everyone. Can everyone also return to school any other resources such as Library books, readers or items sent home during the home study period. We really appreciate your continued support and cooperation.

Works around the School.

Before the end of the June our school is expecting workmen on site to complete programmed works. The school is having the leaking roof over the toilets and front entrance renewed. We will also have guttering replaced and the uneven footpath repaired. Painting of some exterior buildings will also take place. These contractors are working with the school to minimise the level of disruption to students and staff, however there will be barricades in place and some limitation of access to work areas at times. We are thankful of their consideration. It will be worth any inconvenience once completed, helping to keep our school functional and beautiful.

Year 5 & 6 Lake Ainsworth Camp Fees

Most families have paid in full for their child's camp fees from Week 6 Term 1. Afterlee School is not set up for online payments and can only process cash or cheques. Please make arrangements to complete your outstanding amounts if you haven't already done so. An invoice will be attached if you have an outstanding account. Thank you.

Music

Mr Nolan will be running half hour music lessons for students to learn an instrument on Tuesdays from now on. He will be teaching all students an instrument of their choice. Drums, guitar, ukulele and keyboard are the instruments students have chosen to learn. This is a great opportunity that most schools are not in a position to offer students. The cost will be covered by the school.

We are also working on an opportunity to offer woodwind and brass instrument tuition during school hours with the Conservatorium. This would be at a cost to parents of \$16.50 per student with 2 students attending a half hour lesson or \$33 per half hour for 1 student. If there is enough interest the school would then look at subsidising an ensemble practice once per week. Please contact me if you are interested.

Turning up the heat on lunches—Toasted Sandwiches and Wraps

I have purchased a new 4 slice Breville sandwich toaster for school use. During our colder weeks at school our SASS staff are happy to do toasties at lunch time for students. If students bring in a ready made sandwich or wrap we can have them heated in no time.

Some classic combo ideas:

- Cheese and tomato
- Chicken, avocado and cheese
- Ham and cheese
- Spaghetti and cheese
- Bake beans and ham
- Last nights leftovers— just add cheese



Thank you to our SASS staff for organising the toasties as the children will enjoy this warm treat.

Regards Kirsty Kelly

As you may have heard our **Library service with branches at Casino, Kyogle, Evans Head, Coraki and a Mobile Library will re-open on Monday 1 June 2020.**

We understand that for many of your families our libraries are a popular venue, especially for children who wait with us after school while parents finish work for the day.

As part of our Covid-19 re-opening strategy we encourage families and children to limit the time they spend in the Library.

For working parents this might mean having to make alternative arrangements for those whose children would normally wait at the Library after school.

There are no programs/activities planned at this time.

There will be limited seating available and strict social distancing will be enforced.

Please contact the Library on 6660 0250 if you require further information.

Thank you for your understanding,

Sylvia

Sylvia Cooling

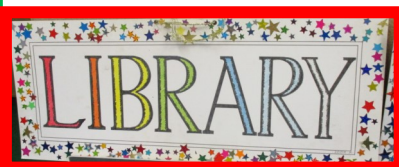
Coordinator Programs and Events

Richmond Valley Council | Locked Bag 10, CASINO NSW 2470

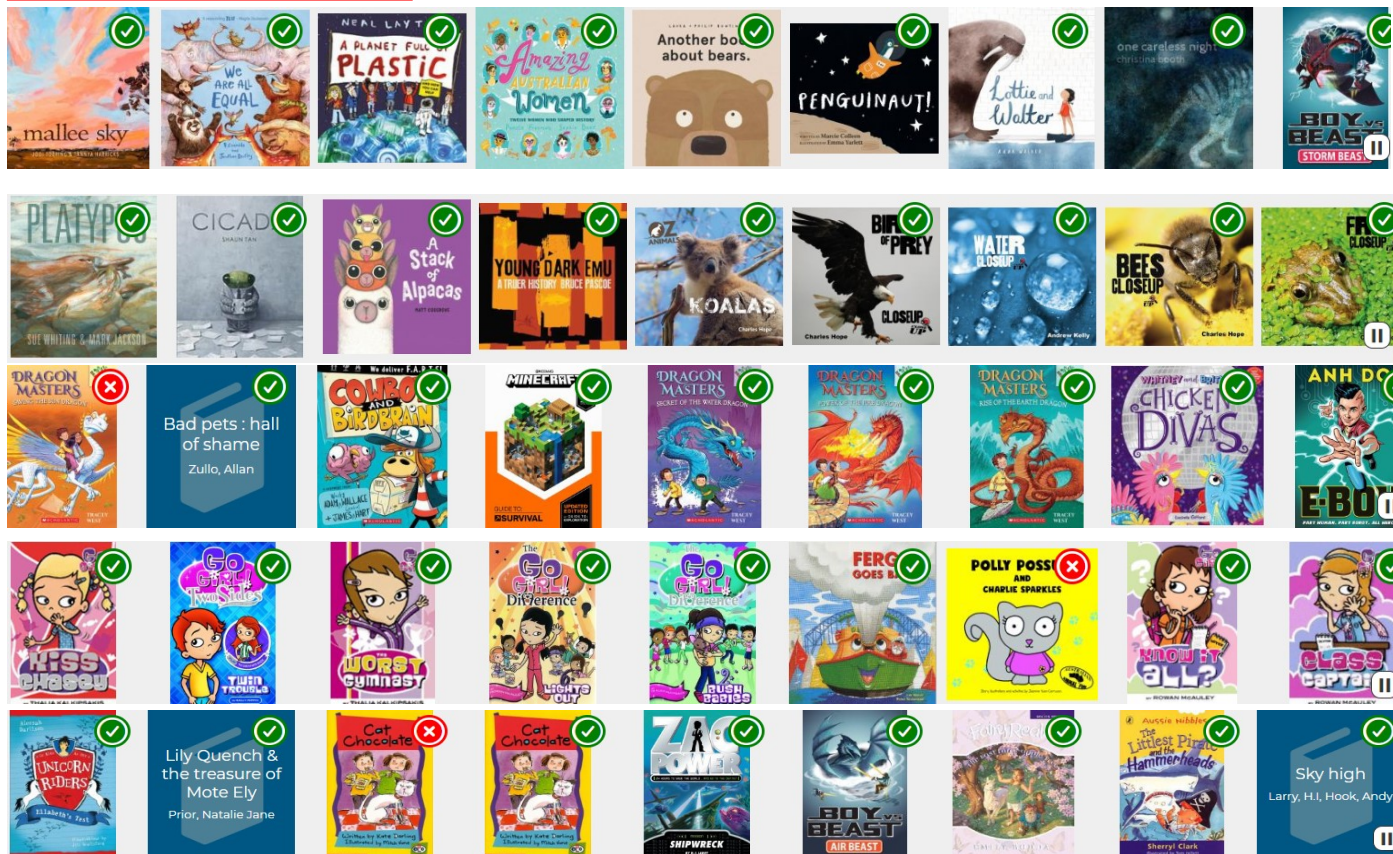
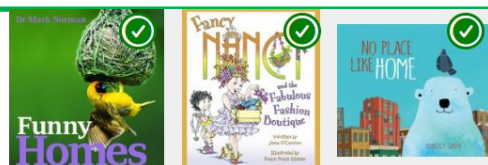


Our new online Kids Club for 5-12 year olds is starting soon and it needs a name!

So come on kids, get your thinking caps on for your chance to win a \$20 Gift Voucher from your shop of choice in Casino (excludes fast food outlets). We need something short, sharp and groovy to grab our attention. Submit your entry via email or drop it to the Library. Remember we will need your name, age, Library card number and contact details. Entries close at 5.30pm Friday 12 June 2020. Good Luck!



Library Day is Tuesday
(please bring your returned books and a Library bag)



Afterlee School has refurbish our Library with lots of great new books. Wendy and Judy have accessioned over 150 new books to our collection. These are some of the new titles we have ready to borrow on Tuesdays from our Afterlee School library. Judy has meticulously been covering our new books with contact at school and at home to ensure they are cared for. Thank you Judy for all your extra work.

Science

Last week in Science we did an experiment melting a solid to liquid.

Stephanie and Noah used their hands "Woah cold" to melt ice.

Nina and Xarya used their mouth to melt ice cubes.

Noah and Josh used paper and dirt.

A fun way to learn about melting solid objects.



We have Science with Miss Fish and Josh on Thursdays at Afterlee School.



Energy tips for your home Here are a few simple tips to help reduce your bills.

Heating

Set your heater to 18-20°C

Did you know each degree over 20°C uses around 10% more energy?



Hot Water

Limit your shower time to 4 minutes. Saving you money off your energy and water bills.

Stand-by power

Wherever possible, switch appliances off at the outlet to reduce your stand-by power costs.

Laundry

Do your laundry during the day so you're using the energy generated from your solar system.

Entertainment and office

Finished with the TV? Game or computer? Remember to switch these off wherever possible. These good habits could save you \$\$ in the long run.

Fast facts about Australian energy use

- 23% of Australians have left their TV on to keep their pets company
- 86% of Australians take showers longer than 5 minutes
- Almost half (47%) of all Aussies leave their appliances plugged in at the wall when not in use



Source: Good Energy Report II, prepared by Empirica Research for Origin Energy, April 2019.